

# MEF Clinics

## Overview

# MEDICAL WARD

New wards commissioned in Jan 2002

- 50 bedded unit
  - 25 male beds
  - 25 female beds
- Central oxygen supply with suction
- Both wards have round the clock cold and hot water supply
- Separate kitchen facilities and water coolers
- All necessary equipments are available
- Total 1801 patients were admitted in 2004

# ICU

3 bedded fully equipped ICU was started in June  
2004

- Patients admitted in 2004 - 99
- The following equipments are available in ICU:
- Central suction & oxygen delivery
- NIBP monitor 2
- Non-invasive multi-parameter 3
- Pulse oximeter 1
- Patient monitor 1
- Suction injector units 3
- Syringe pump 1
- ECG machine 1
- Stand mounted infusion pump 2

# ENDOCRINE CLINIC

Endocrine clinic of this department was started in 1993. It functioned in various makeshift clinics until it was finally shifted to its permanent abode in the Specialty Clinics

- The clinic runs twice weekly
- Average attendance per clinic - 35
- Total registered patients 3542

# DIABETIC CLINIC

Diabetic clinic was started twice weekly in September 2004

- Total Registered patients upto January 2005 = 129
- Registration fee Rs.100 / patient
- Supply of Medicine for one month charged at Rs.50
- Supported by 2 donors with a sum of Rs.50000/ month for 1 year

# RHEUMATOLOGY CLINIC

Rheumatology Clinic was started in Aug.  
2004

- Once weekly
- 10-15 patients attend OPD every week

# Health Education

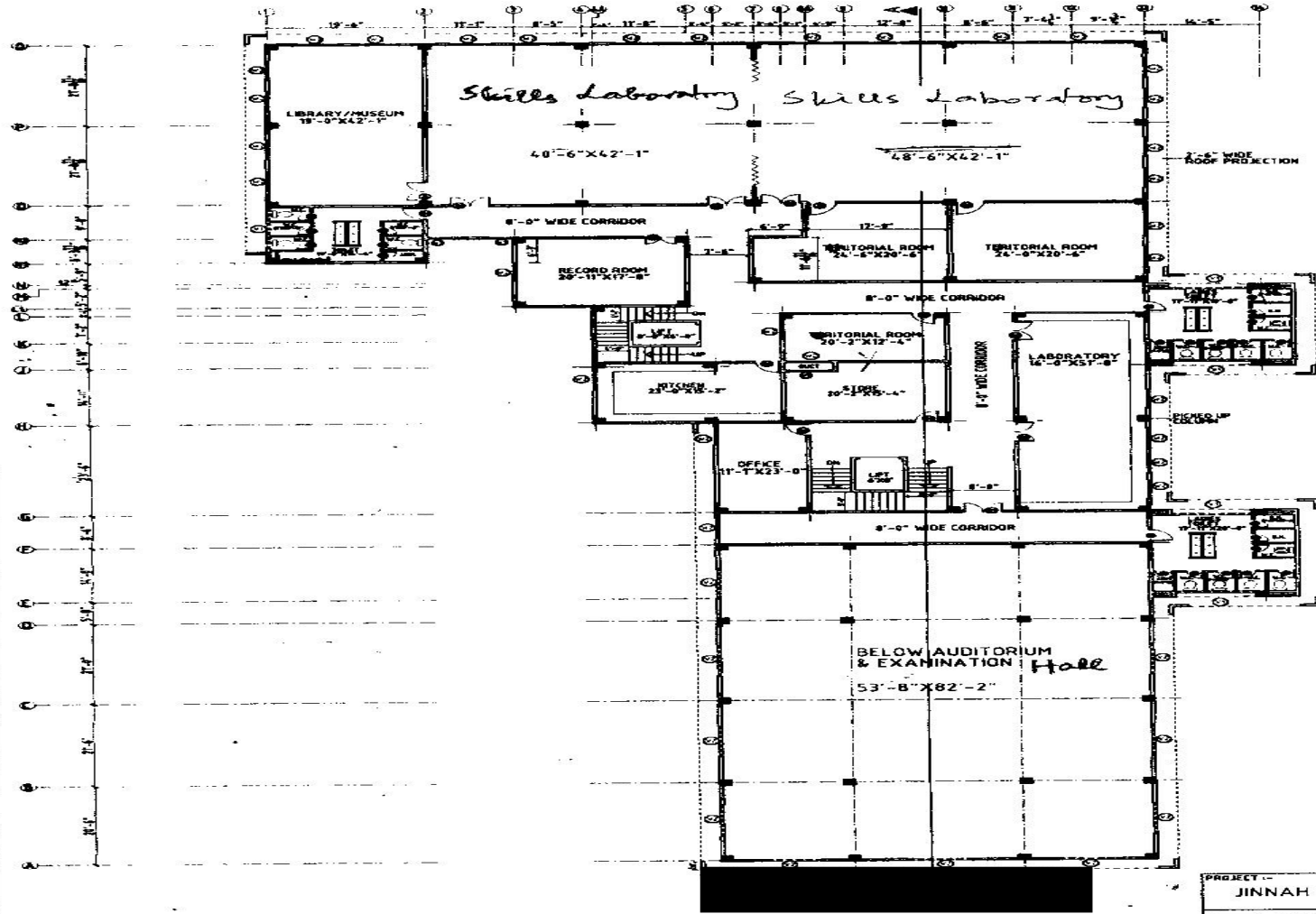
Programme launched on 1<sup>st</sup> April 2004

- Training of Health Educators
- Development of Health education resource material
- Health education issues :
  - Food poisoning / Dysentery
  - Tuberculosis
  - Aids
  - Hepatitis
  - Diabetes
  - Malaria
  - Hypertension
  - Obesity
  - Nutrition & energy requirements
  - Physiology of menstruation
  - Osteoporosis
  - Personal hygiene
  - Limiting family size
  - Infection control in the community

## SUMMARY OF FUNDS OF MEF FROM MAY 1999 UPTO JANUARY 2005.

•	Total Funds generated from Donations, Life Membership, Ordinary Membership, Zakat & Profits on investment & Diabetic Clinic	19.20 million
•	Phase-I (Restructuring)	0.075 million
•	Phase-II (Demolition)	0.055 million
•	Phase-III (Reconstruction of Ward 6)	6.77 million
•	Phase- V & VI (Reconstruction Specialty Clinics including Furniture 1.10 m)	6.37 million
•	Equipments for 3 Beds ICU of Ward 6	1.48 million
–	Central Oxygen System	0.290 million
–	7 Suction Injector Units	0.145million
–	1 computer P.IV, 1 Lap Top & multimedia projector	0.240 million
–	Generator + Installation room (Excluding diesel)	0.265 million
–	Salaries	0.783 million
–	Miscellaneous Expenses	0.417 million
–	3 Split Units	0.138 million
–	Diabetic Clinic Expense	0.218 million
–	Zakat Expenses	0.303 million
–	Mini Telephone Exchange	0.049 million
–	Furniture (Ward 6)	0.218 million
–	Repair & Maintenance, Printing & Stationary , Car Parking Shade, Medicine & Oxygen Trolleys, Stretcher, Wheel chair & other equipments etc	0..740 million    3.80 million.
	<b>Total Funds Used</b>	<b><u>18.55 million</u></b>
	<b>Balance on hand</b>	<b><u>0.650 million</u></b>

# PHASE - 4 : 1<sup>ST</sup> FLOOR OF MEDICAL UNIT II



PROJECT :-  
JINNAH HOSPITAL WARD -6

**FA** FAREED ASSOCIATES  
ARCHITECTS & ENGINEERS

11- C 10TH COMMERCIAL STREET PHASE 8 P.D.B.K. AUTHORITY  
KARACHI PHONE NO. 5882580

DRAWN	AAMIR	DATE	AUG.-2000
CHECKED	IRFAN	TITLE	SECOND FLOOR PLAN
APPROVED		ARCHITECT	
SCALE	1/16" = 1'-0"		
JOB NO.	FA-1355		
DWG. NO.	AR-103		

## Cost Estimate of 1<sup>st</sup> Floor of Medical Unit II

<b>S.No</b>	<b>Description</b>		<b>Amount</b>
1	Construction of RCC Structure 12000 Sqft @ 400 Sq Ft	Rs	5700000
2	Construction of Hall RCC Structure 4650 Sq Ft @ 475 Sq Ft	Rs	2208750
3	Deodar Wood frames & shutters	Rs	250000
4	Marble Flooring Katcha Floor Grinding and Polishing	Rs	1665000
5	Aluminum Windows & Ventilators with 5 mm tinted glass	Rs	250000
6	Electric Material, Pioneer Cables, Wiring with DBs	Rs	450000
7	Internal Plaster all rooms with glazed tiles in Bathrooms	Rs	250000
8	Outside Plaster Grills & Gates (MS)	Rs	300000
9	Cost of Plumbing Material (GI Pipes & Fittings )Asbestos Pipes	Rs	250000
10	Roof Screeding O/H & U/G Tanks	Rs	250000
11	Painting Plastic Emulsion & Distemper Enamel Painting on all wood works	Rs	300000
12	Mirrors in Bath Rooms	Rs	20000
13	Geyser & other accessories	Rs	50000
14	Stair Case & Hand Rail	Rs	250000
15	Door Locks/door handles	Rs	50000
16	Electric Fans & Tube lights	Rs	300000
	<b>Total</b>	<b>Rs</b>	<b>12523750</b>
	10% Contingency Charges	<b>Rs</b>	<b>1252375</b>
	Rupees Thirteen Millions Seven Lacs Seventy Six Thousand One Hundred Twenty Five only	<b>Rs</b>	<b>13776125</b>



**MEDICAL UNIT II**  
**JINNAH POSTGRADUATE MEDICAL CENTRE**  
**KARACHI.**

